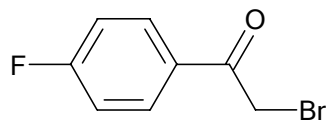
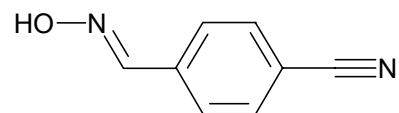


CB680



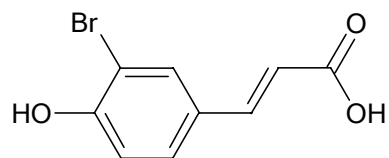
4-Fluorophenacyl bromide, 98%

DH659



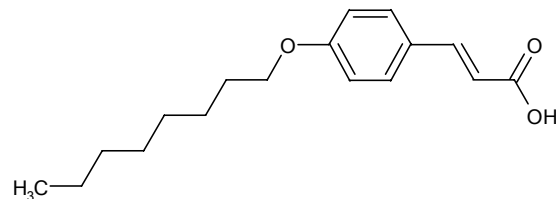
4-Cyanobenzaldehyde oxime, 98%

DH668



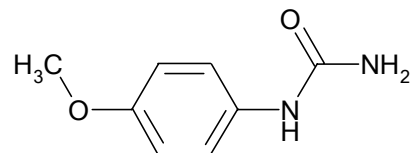
3-Bromo-4-hydroxycinnamic acid, 98%

DH582



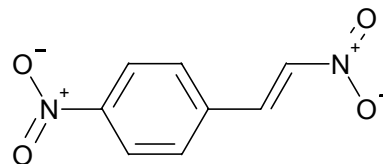
4-Octyloxycinnamic acid

DH662



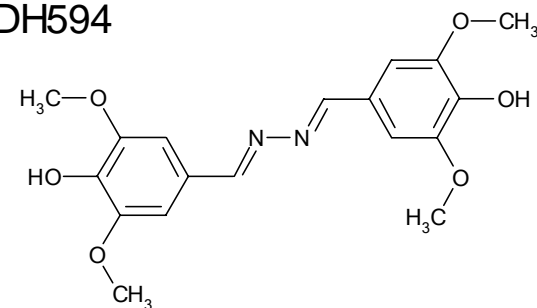
4-Methoxyphenylurea, 98+%

E3871



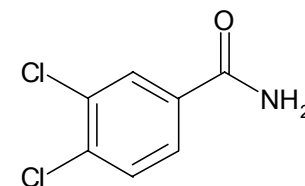
beta,4-Dinitrostyrene, 97%
[4-Nitro-beta-nitrostyrene]

DH594



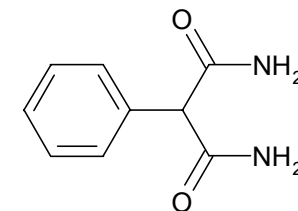
3,5-Dimethoxy-4-hydroxy
benzaldehyde azine

DH664



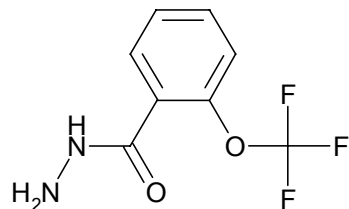
3,4-Dichlorobenzamide, 97%

E3908



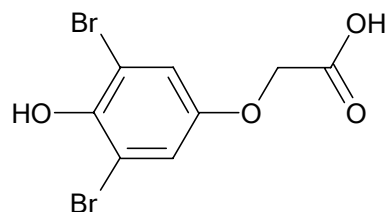
2-Phenylmalonamide, 98%
[2-Phenylmalondiamide]

E3909



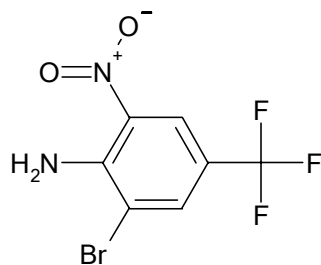
2-(Trifluoromethoxy)benzoic acid
hydrazide, 95%

LH239



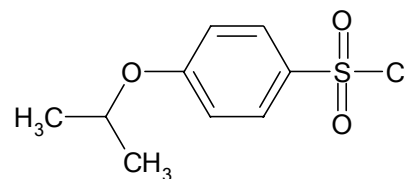
3,5-Dibromo-4-hydroxyphenoxyacetic acid

SR483



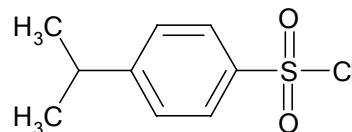
4-Amino-3-bromo
-5-nitrobenzotrifluoride, 98%

E3920



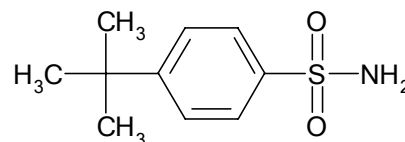
4-Isopropoxybenzenesulphonyl
chloride, 98%

NC1156



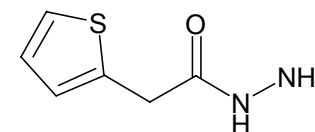
4-Isopropylbenzenesulphonyl chloride, 98%
[Cumene-4-sulphonyl chloride]

WB156



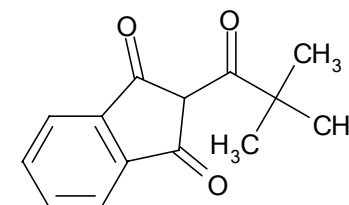
4-tert-Butylbenzenesulphonamide, 98%

ER876



Thiophene-2-acetyl hydrazide, 97%

NC647



2-Pivaloylindane-1,3-dione, 98%
[Pindone]